



Washers - Flat - Hardened Steel

10/4/2018

Indicates item not stocked at time of printing - Please enquire for lead time

E&OE Pricing and all details subject to change without notice - Copyright Miniature Bearings Australia Pty Ltd

MBA Size Listings are a guide to sizes only and must not be solely relied on for critical design information.

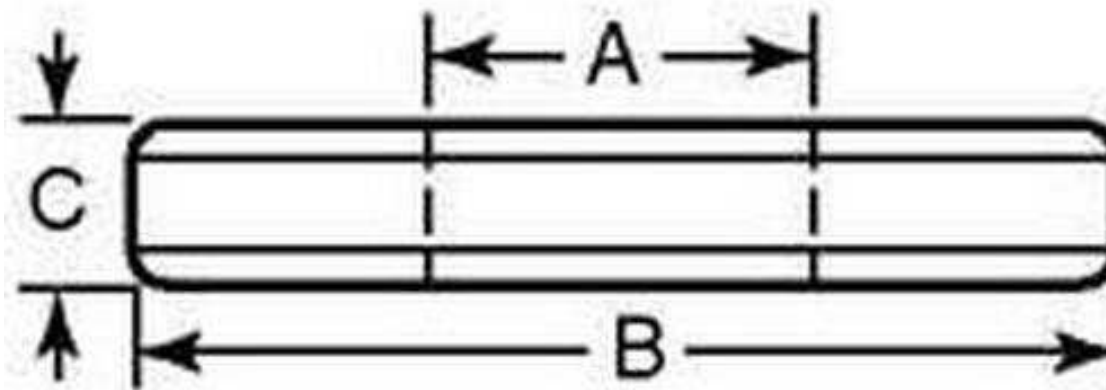
INFORMATION

Medium carbon steel through hardened to RC 43-49. Zinc dichromate finish. All dimensions shows are minimum.

Indicates item not stocked at time of printing - Please enquire for lead time

E&OE Pricing and all details subject to change without notice - Copyright Miniature Bearings Australia Pty Ltd

MBA Size Listings are a guide to sizes only and must not be solely relied on for critical design information.



Indicates item not stocked at time of printing - Please enquire for lead time

E&OE Pricing and all details subject to change without notice - Copyright Miniature Bearings Australia Pty Ltd

MBA Size Listings are a guide to sizes only and must not be solely relied on for critical design information.

Washers - Flat - Hardened Steel

Part Number	Nom. ID (A) mm	B mm	C mm
	<i>inches</i>	<i>inches</i>	<i>inches</i>
# W0060-F-012-016-HS	6 <i>0.236</i>	12 <i>0.472</i>	1.6 <i>0.063</i>
# W0064-F-016-023-HS	6.35 <i>0.250</i>	15.74 <i>0.620</i>	2.29 <i>0.090</i>
# W0079-F-017-023-HS	7.938 <i>0.313</i>	17.29 <i>0.681</i>	2.29 <i>0.090</i>
# W0095-F-020-028-HS	9.525 <i>0.375</i>	20.44 <i>0.805</i>	2.79 <i>0.110</i>
# W0100-F-021-020-HS	10 <i>0.394</i>	21 <i>0.827</i>	2 <i>0.079</i>
# W0111-F-023-028-HS	11.11 <i>0.437</i>	23.24 <i>0.915</i>	2.79 <i>0.110</i>
# W0120-F-024-025-HS	12 <i>0.472</i>	24 <i>0.945</i>	2.5 <i>0.098</i>
# W0127-F-027-048-HS	12.7 <i>0.500</i>	26.79 <i>1.055</i>	4.83 <i>0.190</i>
# W0140-F-028-025-HS	14 <i>0.551</i>	28 <i>1.102</i>	2.5 <i>0.098</i>
# W0143-F-029-043-HS	14.3 <i>0.563</i>	29.48 <i>1.161</i>	4.27 <i>0.168</i>

Indicates item not stocked at time of printing - Please enquire for lead time

E&OE Pricing and all details subject to change without notice - Copyright Miniature Bearings Australia Pty Ltd

MBA Size Listings are a guide to sizes only and must not be solely relied on for critical design information.

Washers - Flat - Hardened Steel

Part Number	Nom. ID (A) mm	B mm	C mm
	<i>inches</i>	<i>inches</i>	<i>inches</i>
# W0159-F-033-052-HS	15.875 <i>0.625</i>	33.14 <i>1.305</i>	5.23 <i>0.206</i>
# W0160-F-030-030-HS	16 <i>0.630</i>	30 <i>1.181</i>	3 <i>0.118</i>
# W0180-F-034-030-HS	18 <i>0.709</i>	34 <i>1.339</i>	3 <i>0.118</i>
# W0191-F-037-052-HS	19.05 <i>0.750</i>	36.93 <i>1.454</i>	5.23 <i>0.206</i>
# W0222-F-044-060-HS	22.225 <i>0.875</i>	44.27 <i>1.743</i>	5.97 <i>0.235</i>
# W0254-F-051-060-HS	25.4 <i>1.000</i>	50.62 <i>1.993</i>	5.97 <i>0.235</i>
# W0318-F-063-060-HS	31.8 <i>1.252</i>	62.67 <i>2.467</i>	5.97 <i>0.235</i>
# W0381-F-076-064-HS	38.1 <i>1.500</i>	76.2 <i>3.000</i>	6.35 <i>0.250</i>

Indicates item not stocked at time of printing - Please enquire for lead time

E&OE Pricing and all details subject to change without notice - Copyright Miniature Bearings Australia Pty Ltd

MBA Size Listings are a guide to sizes only and must not be solely relied on for critical design information.

DISTRIBUTED BY

Distributed By:

