



Washers - Flat - Stamped - Heavy Duty - Hardened

10/4/2018

Indicates item not stocked at time of printing - Please enquire for lead time

E&OE Pricing and all details subject to change without notice - Copyright Miniature Bearings Australia Pty Ltd

MBA Size Listings are a guide to sizes only and must not be solely relied on for critical design information.

Page 1 of 6

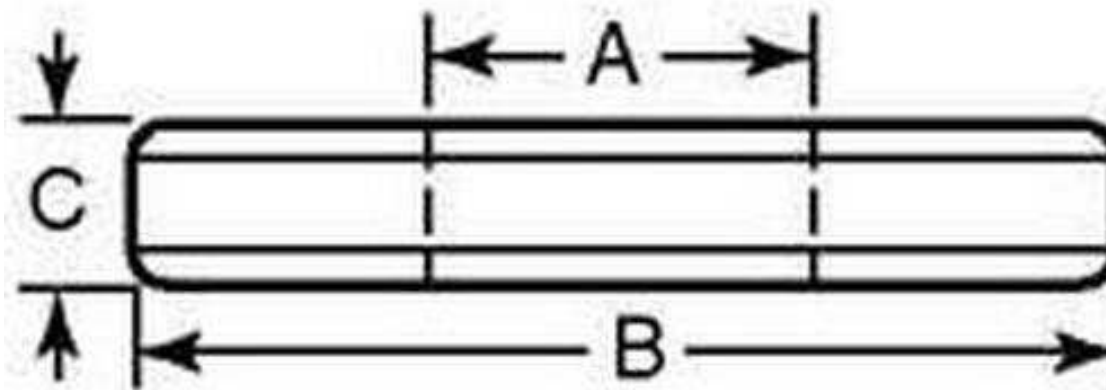
INFORMATION

Heat treated. Black oxide finish.

Indicates item not stocked at time of printing - Please enquire for lead time

E&OE Pricing and all details subject to change without notice - Copyright Miniature Bearings Australia Pty Ltd

MBA Size Listings are a guide to sizes only and must not be solely relied on for critical design information.



Indicates item not stocked at time of printing - Please enquire for lead time

E&OE Pricing and all details subject to change without notice - Copyright Miniature Bearings Australia Pty Ltd

MBA Size Listings are a guide to sizes only and must not be solely relied on for critical design information.

Washers - Flat - Stamped - Heavy Duty - Hardened

Part Number	Nom. ID (A) mm <i>inches</i>	Outside Diameter (B) mm <i>inches</i>	Width (C) mm <i>inches</i>
# W0048-F-013-024-HS	4.762 <i>0.187</i>	12.7 <i>0.500</i>	2.38 <i>0.094</i>
# W0060-F-017-030-HS	6 <i>0.236</i>	17 <i>0.669</i>	3 <i>0.118</i>
# W0064-F-016-032-HS	6.35 <i>0.250</i>	15.875 <i>0.625</i>	3.18 <i>0.125</i>
# W0079-F-019-032-HS	7.938 <i>0.313</i>	19.05 <i>0.750</i>	3.18 <i>0.125</i>
W0080-F-023-040-HS	8 <i>0.315</i>	23 <i>0.906</i>	4 <i>0.157</i>
# W0095-F-022-032-HS	9.525 <i>0.375</i>	22.23 <i>0.875</i>	3.18 <i>0.125</i>
# W0095-F-022-048-HS	9.525 <i>0.375</i>	22.23 <i>0.875</i>	4.76 <i>0.187</i>
# W0100-F-028-040-HS	10 <i>0.394</i>	28 <i>1.102</i>	4 <i>0.157</i>
# W0111-F-025-032-HS	11.112 <i>0.437</i>	25.4 <i>1.000</i>	3.18 <i>0.125</i>
# W0120-F-035-050-HS	12 <i>0.472</i>	35 <i>1.378</i>	5 <i>0.197</i>

Indicates item not stocked at time of printing - Please enquire for lead time

E&OE Pricing and all details subject to change without notice - Copyright Miniature Bearings Australia Pty Ltd

MBA Size Listings are a guide to sizes only and must not be solely relied on for critical design information.

Washers - Flat - Stamped - Heavy Duty - Hardened

Part Number	Nom. ID (A) mm	Outside Diameter (B) mm	Width (C) mm
	<i>inches</i>	<i>inches</i>	<i>inches</i>
# W0127-F-029-032-HS	12.7 <i>0.500</i>	28.58 <i>1.125</i>	3.18 <i>0.125</i>
# W0127-F-029-048-HS	12.7 <i>0.500</i>	28.58 <i>1.125</i>	4.76 <i>0.187</i>
# W0159-F-035-032-HS	15.875 <i>0.625</i>	34.93 <i>1.375</i>	3.18 <i>0.125</i>
# W0159-F-035-048-HS	15.875 <i>0.625</i>	34.93 <i>1.375</i>	4.76 <i>0.187</i>
# W0160-F-045-060-HS	16 <i>0.630</i>	45 <i>1.772</i>	6 <i>0.236</i>
# W0191-F-041-040-HS	19.05 <i>0.750</i>	41.28 <i>1.625</i>	3.97 <i>0.156</i>
# W0191-F-041-064-HS	19.05 <i>0.750</i>	41.28 <i>1.625</i>	6.35 <i>0.250</i>
# W0200-F-050-060-HS	20 <i>0.787</i>	50 <i>1.969</i>	6 <i>0.236</i>
# W0222-F-044-040-HS	22.225 <i>0.875</i>	44.45 <i>1.750</i>	3.97 <i>0.156</i>
# W0240-F-060-080-HS	24 <i>0.945</i>	60 <i>2.362</i>	8 <i>0.315</i>

Indicates item not stocked at time of printing - Please enquire for lead time

E&OE Pricing and all details subject to change without notice - Copyright Miniature Bearings Australia Pty Ltd

MBA Size Listings are a guide to sizes only and must not be solely relied on for critical design information.

Washers - Flat - Stamped - Heavy Duty - Hardened

Part Number	Nom. ID (A) mm	Outside Diameter (B) mm	Width (C) mm
	<i>inches</i>	<i>inches</i>	<i>inches</i>
# W0254-F-051-048-HS	25.4	50.8	4.76
	1.000	2.000	0.187

Indicates item not stocked at time of printing - Please enquire for lead time

E&OE Pricing and all details subject to change without notice - Copyright Miniature Bearings Australia Pty Ltd
 MBA Size Listings are a guide to sizes only and must not be solely relied on for critical design information.

DISTRIBUTED BY

Distributed By:

