



# Yoke Ends - Blank

10/4/2018

# Indicates item not stocked at time of printing - Please enquire for lead time

E&OE Pricing and all details subject to change without notice - Copyright Miniature Bearings Australia Pty Ltd

MBA Size Listings are a guide to sizes only and must not be solely relied on for critical design information.

## INFORMATION

Linkage Connectors with blank ends - no hole

Drop forged steel machined to SAE standards

Also see clevis joints

This catalogue to be read in conjunction with information at <http://www.minibearings.com.au//partslist/pinsclevisplain/fasteners/all/1/>

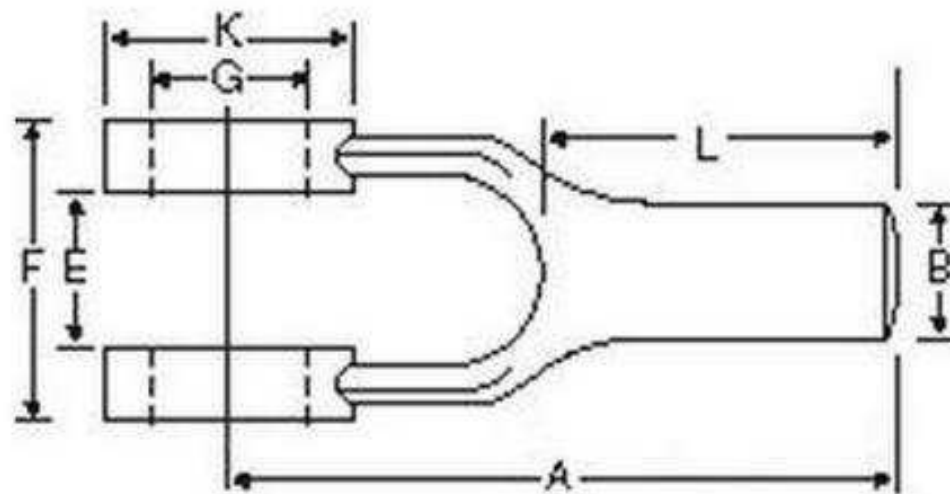
<http://www.minibearings.com.au//categories/clevis+joints/all/pics/>

<http://www.minibearings.com.au//categories/clevis+pins/all/pics/>

# Indicates item not stocked at time of printing - Please enquire for lead time

E&OE Pricing and all details subject to change without notice - Copyright Miniature Bearings Australia Pty Ltd

MBA Size Listings are a guide to sizes only and must not be solely relied on for critical design information.



# Indicates item not stocked at time of printing - Please enquire for lead time

E&OE Pricing and all details subject to change without notice - Copyright Miniature Bearings Australia Pty Ltd

MBA Size Listings are a guide to sizes only and must not be solely relied on for critical design information.

## Yoke Ends - Blank

| Part Number | Effective Lgth (A)<br>mm<br><i>inches</i> | Hub Diameter (B)<br><i>inches</i> | Gap (E) +/- 0.38 mm<br><i>inches</i> | Width (F) +/- 0.38 mm<br><i>inches</i> | Hole Size (G) +0.25<br>mm<br><i>inches</i> | Stud Height (L) mm<br><i>inches</i> | Housing Diameter<br>(K) mm<br><i>inches</i> |
|-------------|---|-----------------------------------|--------------------------------------|--|--|-------------------------------------|---|
| YE-12RS     | 44.450<br><i>1.750</i>                    | 6.350<br><i>0.250</i>             | 7.140<br><i>0.281</i>                | 7.14<br><i>0.281</i>                   | 6.35<br><i>0.250</i>                       | 24<br><i>0.945</i>                  | 13<br><i>0.512</i>                          |
| YE-13RS     | 50.800<br><i>2.000</i>                    | 7.940<br><i>0.313</i>             | 8.730<br><i>0.344</i>                | 8.73<br><i>0.344</i>                   | 7.94<br><i>0.313</i>                       | 27<br><i>1.063</i>                  | 15<br><i>0.591</i>                          |
| YE-14RS     | 53.980<br><i>2.125</i>                    | 9.530<br><i>0.375</i>             | 11.110<br><i>0.437</i>               | 11.11<br><i>0.437</i>                  | 9.53<br><i>0.375</i>                       | 25<br><i>0.984</i>                  | 17<br><i>0.669</i>                          |
| YE-15RS     | 57.150<br><i>2.250</i>                    | 11.110<br><i>0.437</i>            | 12.700<br><i>0.500</i>               | 12.70<br><i>0.500</i>                  | 11.11<br><i>0.437</i>                      | 24<br><i>0.945</i>                  | 21<br><i>0.827</i>                          |
| YE-16RS     | 63.500<br><i>2.500</i>                    | 12.700<br><i>0.500</i>            | 14.290<br><i>0.563</i>               | 14.29<br><i>0.563</i>                  | 12.70<br><i>0.500</i>                      | 25<br><i>0.984</i>                  | 24<br><i>0.945</i>                          |
| YE-17RS     | 73.030<br><i>2.875</i>                    | 15.880<br><i>0.625</i>            | 17.460<br><i>0.687</i>               | 17.46<br><i>0.687</i>                  | 15.88<br><i>0.625</i>                      | 29<br><i>1.142</i>                  | 30<br><i>1.181</i>                          |
| YE-18RS     | 92.080<br><i>3.625</i>                    | 19.050<br><i>0.750</i>            | 20.640<br><i>0.813</i>               | 20.64<br><i>0.813</i>                  | 19.05<br><i>0.750</i>                      | 38<br><i>1.496</i>                  | 37<br><i>1.457</i>                          |
| YE-20RS     | 152.400<br><i>6.000</i>                   | 25.400<br><i>1.000</i>            | 26.990<br><i>1.063</i>               | 26.99<br><i>1.063</i>                  | 25.40<br><i>1.000</i>                      | 76<br><i>2.992</i>                  | 49<br><i>1.929</i>                          |
| YE-16ARS    | 165.100<br><i>6.500</i>                   | 12.700<br><i>0.500</i>            | 14.290<br><i>0.563</i>               | 14.29<br><i>0.563</i>                  | 12.70<br><i>0.500</i>                      | 127<br><i>5.000</i>                 | 24<br><i>0.945</i>                          |

# Indicates item not stocked at time of printing - Please enquire for lead time

E&OE Pricing and all details subject to change without notice - Copyright Miniature Bearings Australia Pty Ltd

MBA Size Listings are a guide to sizes only and must not be solely relied on for critical design information.

DISTRIBUTED BY

Distributed By:

